



minnesota cancer alliance summit

2026 | *the power of collaboration*

February 26, 2026

McNamara Alumni Center

Minneapolis, MN



Breakout Session #3

Heritage Gallery

February 25, 2026

McNamara Alumni Center



Don't Forget to Complete the Evaluation!

Scan the QR code to complete the Cancer Summit 2026 evaluation form. This is required for claiming any credit hours of continuing education.



Powering Equity: How Community Health Workers Fill Gaps in Cancer Care

Rachel Stoll, CHW

Angela Fields, CHW

Foua-Choua Khang, CHW, MBA



Financial Disclosure Statement

- Foua-Choua Khang, CHW, MBA is an employee of Blue Cross Blue Shield Minnesota
- There are no additional relevant financial disclosures for this session.



Bridging the Gap: *How Community Health Workers Drive Equity in Cancer Prevention and Care*

Rachel Stoll, CHW

Director of Programs

Minnesota Community Health Worker Alliance



Financial Disclosure Statement

- The presenter declares that she has no relevant or material financial interests that relate to the statements made in this presentation



Learning Objectives:

1. Understand CHW Scope of Practice and its relevance to cancer prevention and care.
2. Describe how CHWs can be integrated into various parts of the cancer care continuum.
3. Develop actionable steps to integrate CHW strategies in equity-focused cancer initiatives.



Minnesota Community Health Worker Scope of Practice

Bridge	The Gap Between Communities and Systems
Navigate	Health and Human Services
Advocate	For Individual and Community Needs
Provide	Direct Patient/Client Services
Build	Individual and Community Capacity



CHW Integration in Cancer Care Continuum

Prevention

- Health education on risk factors and lifestyle changes
- Real life application of provider recommendations
- Support in establishment with Primary Care

Detection/ Screening

- Trust within affected communities
- Outreach, motivational interviewing, cultural mediation
- Support in scheduling and addressing barriers

Diagnosis

- Care team communication
- Assist patients in understanding diagnosis
- Attend appointments

Treatment

- Culturally tailored strategies for symptom management
- Care team coordination and communication
- Connection to resources to address SDOH

Survivorship

- Connection to survivor groups
- Health education
- Ensure follow-up as recommended by providers

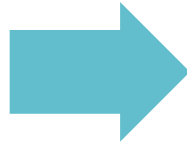
End-of-Life Care

- Palliative care navigation
- Connection to culturally informed support



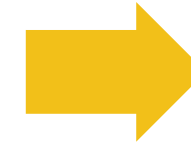
Integrate CHWs more deeply into cancer prevention and care

- Develop mechanisms to support CHW roles in outreach, education, screening navigation, and care coordination.
- Develop joint cancer care peer-to-peer learning for CHWs working in cancer care.
- Provide coordinated technical assistance for employers integrating CHWs into cancer care teams.
 - Employer readiness assessments
 - Supervisor training and peer learning
 - CHW onboarding and upskilling



Strengthen CHW workforce capacity and organizational readiness

- Expand CHW training and ongoing professional development for cancer-related care.
- Increase access to CHW programs in rural and underserved communities.
- Support employers with coordinated resources for team-based CHW integration.
- Work together to align standards, competencies, and expectations across both statewide plans.



Build shared CHW measurement and financing systems

- Co-develop a shared CHW cancer metrics set and harmonize reporting across partners.
- Collaborate on publishing shared results demonstrating CHW impact on equity, screening, navigation, and patient experience.
- Align financing strategies to sustain CHW cancer navigation roles.
- Develop pilot contracts and track outcomes
 - Build payment supports resilient to future Medicaid cuts

Partnership Opportunities



Thank you!

Rachel Stoll, CHW

Director of Programs

**Minnesota Community Health Worker
Alliance**

Rachel@mnchwalliance.org





TRUST AS INFRASTRUCTURE

Community Health
Workers are part of the
solution

WELCOME AND HOW ARE YOU?

Survey of the room: Raise your hand if
your day went as planned?



AGENDA

Community Health Workers Build Trust in Prevention and Survivorship

Integration of CHWs in the Cancer Care Continuum

Questions



SURVIVORSHIP GAP



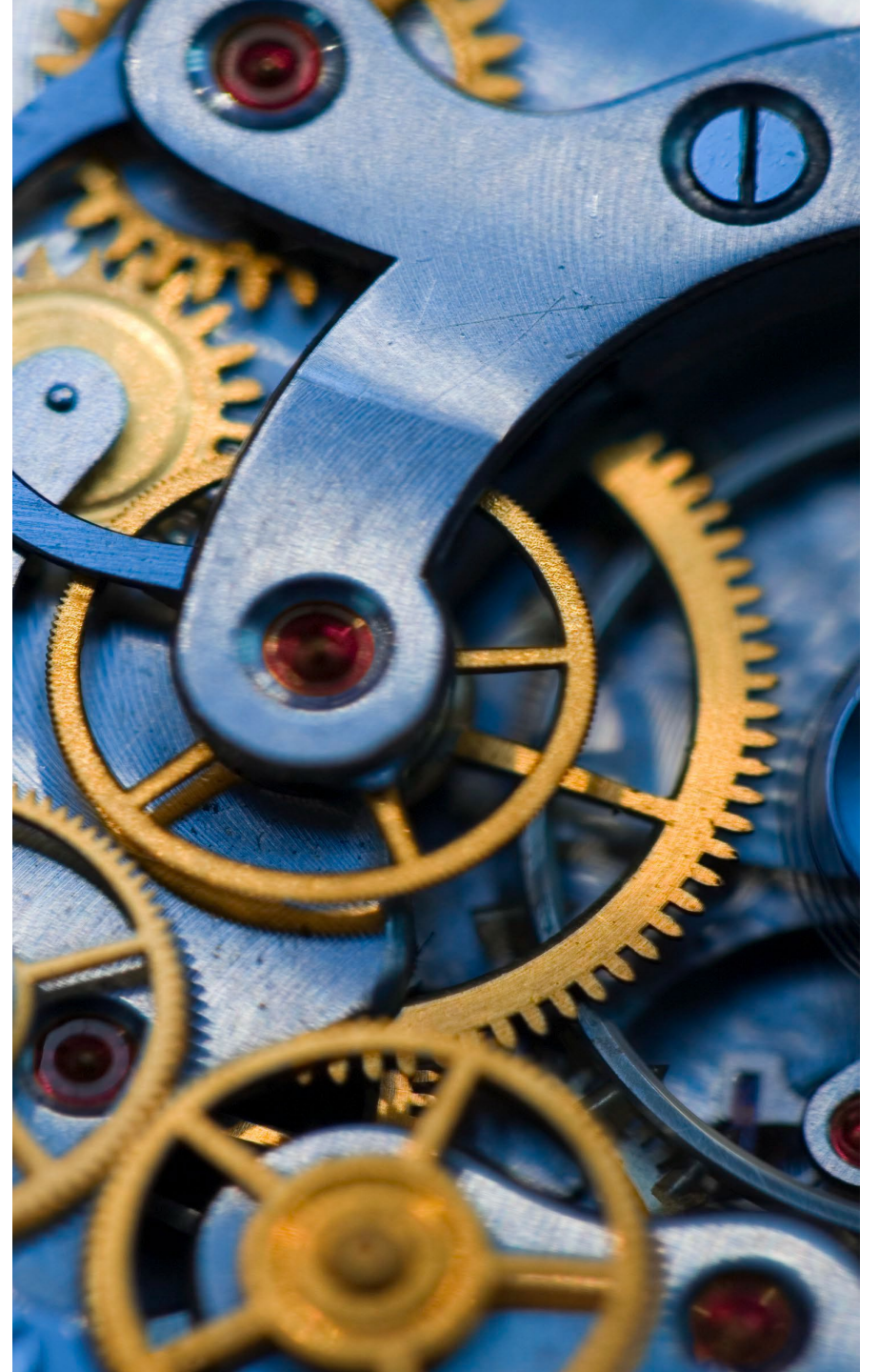
CHW TRUST IN ACTION (SURVIVORSHIP)

1. Re-engage survivors who fall out of follow-up care
2. Navigate barriers: fear, cost, mistrust
3. Translate system language into human language
4. Survivorship is a relationship over time



SYSTEM & POLICY CONNECTION

- Trust is intergenerational, cultural, and built over time through relationships and respect
- Prevention requires safe spaces where questions can be asked without shame
- CHWs bridge community experience to systems change, informing programs, funding, and policy before diagnosis



PREVENTION & SCREENING GAPS



CHW TRUST IN ACTION (PREVENTION)



CLOSING & CALL TO ACTION



QUESTIONS

Information:

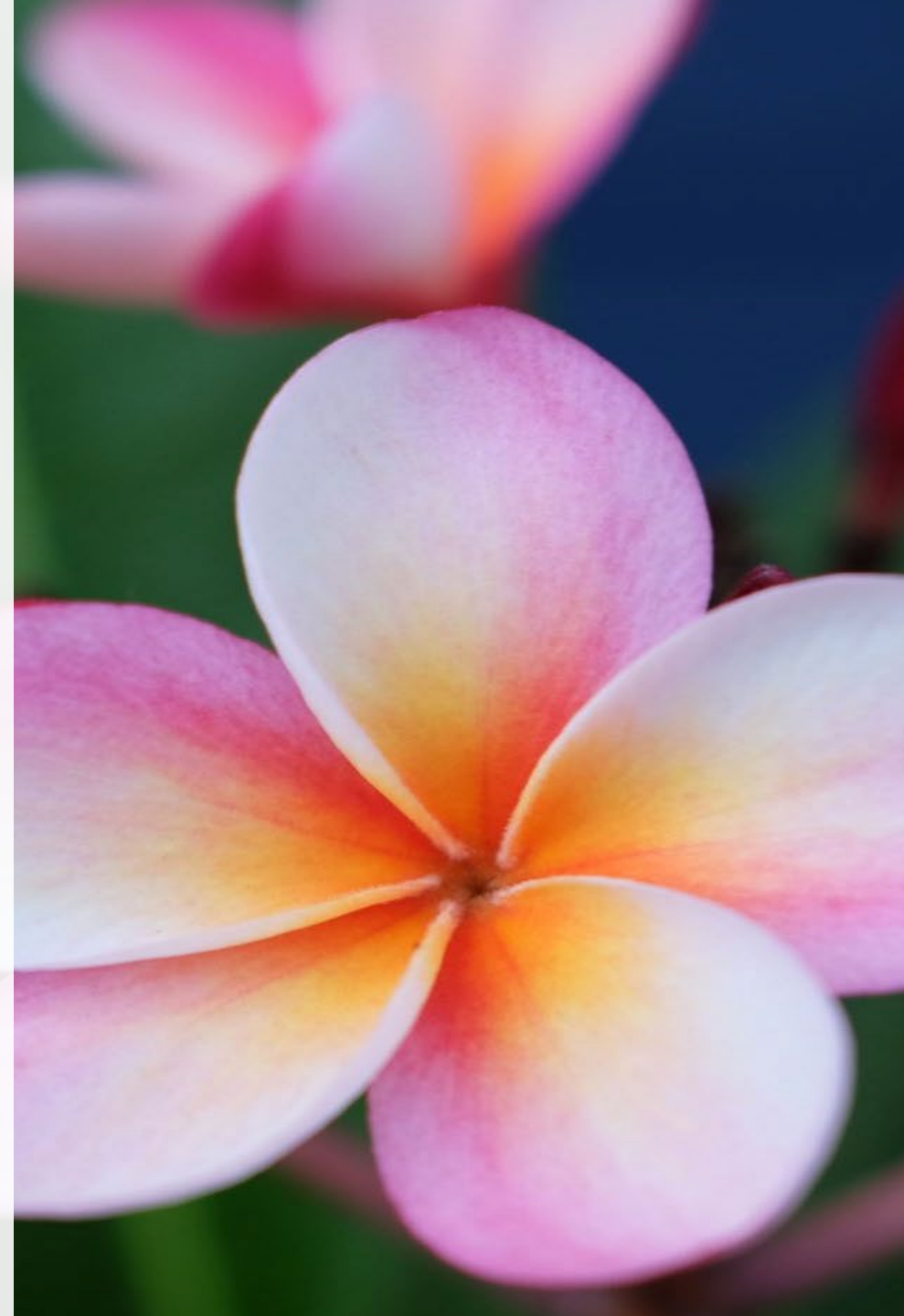
Angela Fields CHW, Doula

info@chwconceptsllc.com

Foua Choua Khang, MBA, CHW

fouachouakhang@gmail.com

Foua.khang@bluecrossmn.com



Don't Forget to Complete the Evaluation!

Scan the QR code to complete the Cancer Summit 2026 evaluation form. This is required for claiming any credit hours of continuing education.

